



Research Solution Provider  
& Bioreagent Supplier



## CONTACT US

### Bertin Pharma - Head Office

10 bis Avenue André Marie Ampère  
Parc d'activités du Pas du Lac  
78180 Montigny-le-Bretonneux  
FRANCE

- +33 (0)139 306 260
- +33 (0)139 306 299
- info@bertinpharma.com



 [bertinpharma.com](http://bertinpharma.com)

© Concept and design www.agence202.com - Photo credit : www.fotolia.com and www.istockphoto.com

Dr. Xavier MORGE

Managing Director



Explore our values & creative solutions!



VIDEO

Please flash this QRCode to see our video bertinpharma.com



**Bertin Pharma**, is a European Leading Research Solution Provider and Bioreagent Supplier.

### 1 INNOVATE our everyday challenge

Our long track experience is underpinned by a solid knowledge in sciences, techniques and regulatory affairs, for both small molecules and biologics, acquired for the last 30 years. Thanks to our multidisciplinary teams led by seasoned management, we propose innovative solutions to our customers.

### 2 IMAGINE tomorrow healthcare

In order to create a healthier world, we work hard with our panel of expertise and off-the-shelf products. We support all pharmaceuticals, cosmetics or food industries.

### 3 INTERNATIONAL SCOPE human scale

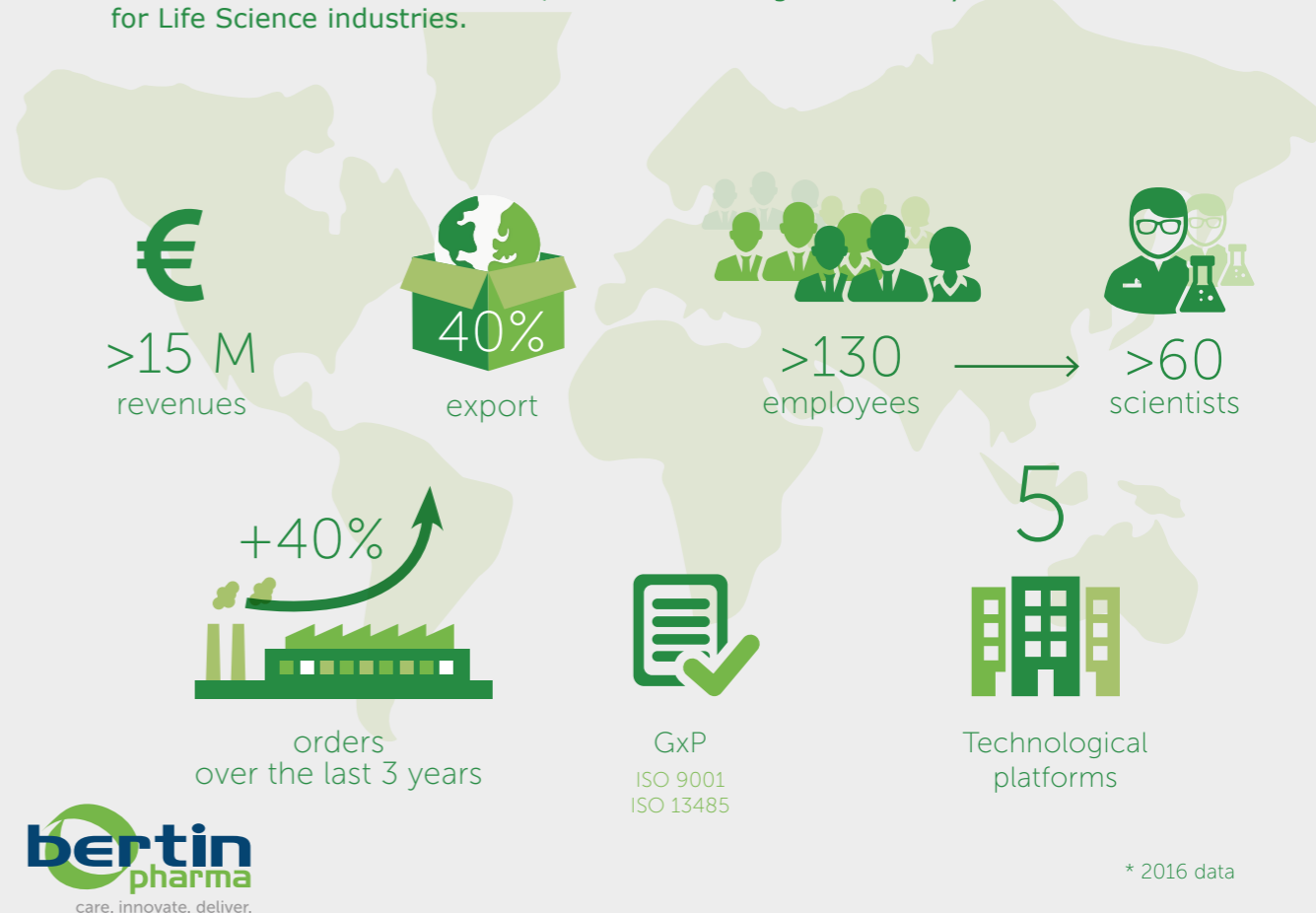
Our customers have a worldwide scope - from Big & Mid Pharmas, biotechs to public research laboratories - but our deep belief is that the key of success belongs to a human scale. A single project manager coordinates a team of experts dedicated to the success of your project.

### 4 A RESOLUTE FOCUS on R&D leveraging in a nurturing environment

We are very active in the R&D sphere: we sit on the board of Directors of the competitiveness cluster Medicen Paris Region, and of the French Association of Innovation and Service Companies for Life Sciences (AFSSI), being one of its co-founders.

GENERAL OVERVIEW \*  
BERTIN PHARMA

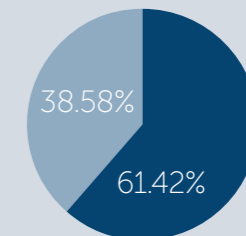
**Bertin Pharma**, subsidiary of Bertin Technologies – CNIM Group, which acts at the forefront of industrial innovation, has been offering for over 30 years creative solutions for Life Science industries.



\* 2016 data

GENERAL OVERVIEW  
CNIM

**Bertin Pharma** belongs to CNIM Group - a majority family shareholding for 3 generations with a patrimonial position ensuring the company lifetime.



The innovation & Systems sector covers life sciences, equipment for nuclear industry and large scale scientific instrument, defense, digital security and intelligence, consultancy and innovative engineering services, industrial solutions and life science solutions.



CNIM runs projects and markets equipment throughout the world

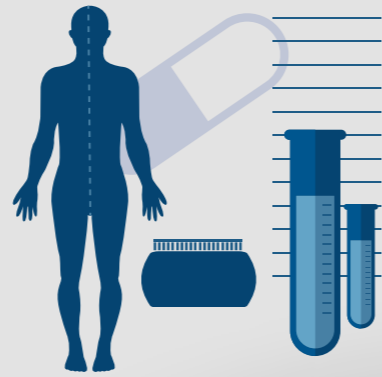


info@bertinpharma.com

bertinpharma.com

# YOUR COMPOUND DEVELOPMENT MANAGED BY OUR CROSS-FUNCTIONAL TEAMS

## DRUG LIFE CYCLE



### CUSTOMERS



Pharmas Biotechs

Cosmetics



Nutraceuticals



Academics

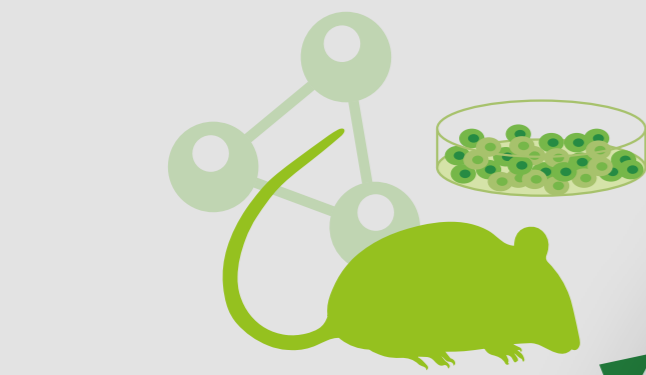


### SMALL & LARGE MOLECULES

Chemical entities



Biologics & vaccines



## TRANSLATIONAL MEDICINE FOR INFECTIOUS & IMMUNE DISEASES



Translational medicine is a concept for getting beneficial treatments quicker to patients.

Bertin Pharma's objective is to evidence the efficacy of new chemical entities, biologics, vaccines, gene therapies, nutraceuticals or cosmetics and determine their mode of action (primary pharmacodynamic). We also assess their possible adverse effects (toxicity & off-target interactions).

### MAIN FEATURES

- ▶ Expert at the French Drug Agency (ANSM)
- ▶ Long term R&D cooperation with CEA to develop new models, access to first-class facilities
- ▶ High security laboratories & animal facilities (rodents & macaques)
- ▶ Large immunology & virology platform
- ▶ Infectious strain qPCR quantification (biosafety & biodefense)



## ADME/DMPK FOR CHEMICAL ENTITIES & BIOLOGICS

Bertin Pharma proposes a full and comprehensive range of drug metabolism and pharmacokinetic (ADME/DMPK) studies in support of drug/biotech candidate selection, lead optimisation to regulatory submission. Our cross-functional teams can design standard studies and innovative approaches according to your research objectives.

### MAIN FEATURES

- ▶ Fast ADME screening process (PK snapshot): > 200 compounds within 12 months
- ▶ Multi-analytical techniques for drug & biomarker bioanalysis
- ▶ Quantification of membrane protein by LC-MS/MS-MRM: MS2Plex®
- ▶ Sustainable background in set-up & validation methods (> 500 methods) for NCEs, biologics & biomarkers



## DRUG DEVELOPMENT PROCESS, MANUFACTURING & CLINICAL SUPPLIES

Bertin Pharma offers optimum development solutions with the widest range of technologies under Quality By Design and appropriate Quality environments for generics, OTC and ethical (new chemical entities & biologics) products.

A single project manager will design with you the best formulation development for a smooth industrial transfer either in-house for clinical and small commercial batches or to international manufacturing companies.

### MAIN FEATURES

- ▶ Innovative formulation platforms
- ▶ Solubility enhancement of BCS Class 2 compound expertise
- ▶ Formulation, GMP manufacturing & control of biologics
- ▶ Transfer site management
- ▶ Highly potent drug facilities



## BIOREAGENT & BIOANALYTICAL TOOL PROVIDER

### MAIN FEATURES

- ▶ Patented technologies
- ▶ Solid in-house knowledge in biomarker development
- ▶ Dedicated customer care
- ▶ 70% of articles available within 8 days

Bertin Pharma supplies innovative and state-of-the-art bioreagent and bioanalytical tools to academic and industrial customers to achieve their research targets (metabolic disease, inflammation, oxidative injury, etc.).

Our long R&D experience combined with an international distribution network enable us to deliver life science tools on time and to support you throughout your experimentation.